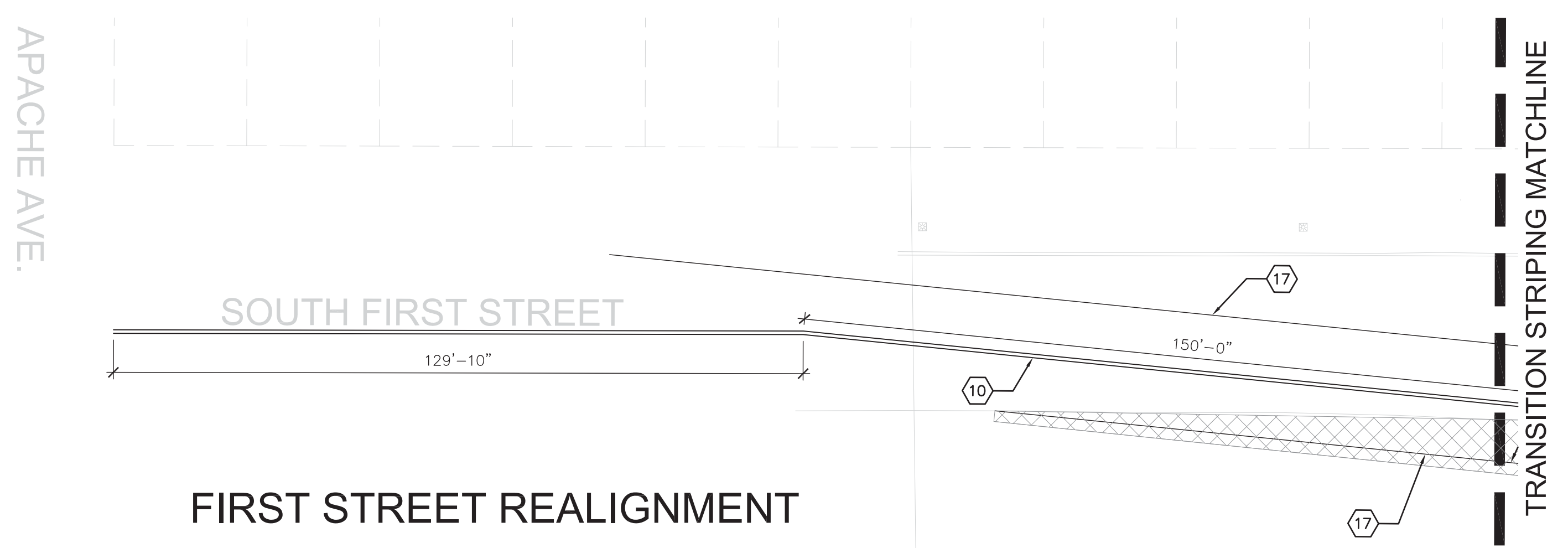


A1 SIGNAGE AND STRIPING PLAN
SCALE: 1"=20'-0"

SIGNING AND STRIPING KEYED NOTES

1. EXISTING STOP SIGN TO REMAIN.
2. INSTALL RELOCATED PEDESTRIAN CROSSING SIGN PER NMDOT STANDARD DRAWING 701-02-2/3. SEE SHEET LD101, KEYED NOTE #21.
3. INSTALL RELOCATED HISTORIC DISTRICT SIGN. SEE SHEET LD101, KEYED NOTE #27.
4. PROVIDE AND INSTALL ADA PARKING SIGN PER DETAIL C4/LS502.
5. PROVIDE AND INSTALL COMBINATION "STOP" SIGN AND "STATE LAW YIELD TO PEDESTRIANS IN CROSSWALKS" SIGN PER NMDOT STANDARD DRAWING 701-02-2/3.
6. PROVIDE AND INSTALL 25 MPH SPEED LIMIT SIGN (R2-1) PER NMDOT STANDARD DRAWING 701-02-2/3.
7. INSTALL HANDICAP STRIPING PER DETAILS C3/LS502, C5/LS502.
8. NOT USED.
9. INSTALL 12" WIDE WHITE STOP BAR FROM ROAD CENTER TO OUTER EDGE.
10. INSTALL DOUBLE 4" YELLOW LINE ON ASPHALT USING TRAFFIC-RATED PAINT. LIMITS: FROM 100' NORTH OF INTERSECTION WITH PARK AVE TO THE INTERSECTION OF APACHE.
11. NOT USED.
12. NOT USED.
13. NOT USED.
14. NOT USED.
15. NOT USED.
16. INSTALL 4" WIDE WHITE STRIPING FOR ANGLED PARKING SPACES, USING TRAFFIC-RATED PAINT.
17. INSTALL 4" WIDE WHITE EDGE LINE FOR 11' DRIVING LANE SOUTH OF RIO GRANDE INTERSECTION, USING TRAFFIC-RATED PAINT.
18. PHASE 1 MULTI-DIRECTIONAL CROSSWALK. INSTALL 12" WIDE WHITE STRIPING FOR PEDESTRIAN INTERIOR AND PERIMETER MARKINGS USING TRAFFIC RATED PAINT. PERIMETER MARKINGS SHALL BE FULL WIDTH OF ROAD. INTERIOR MARKINGS SHALL BE ANGLED BETWEEN ADA RAMPS WITH 5' PATH WIDTH AND 5' INTERIOR WINGS.



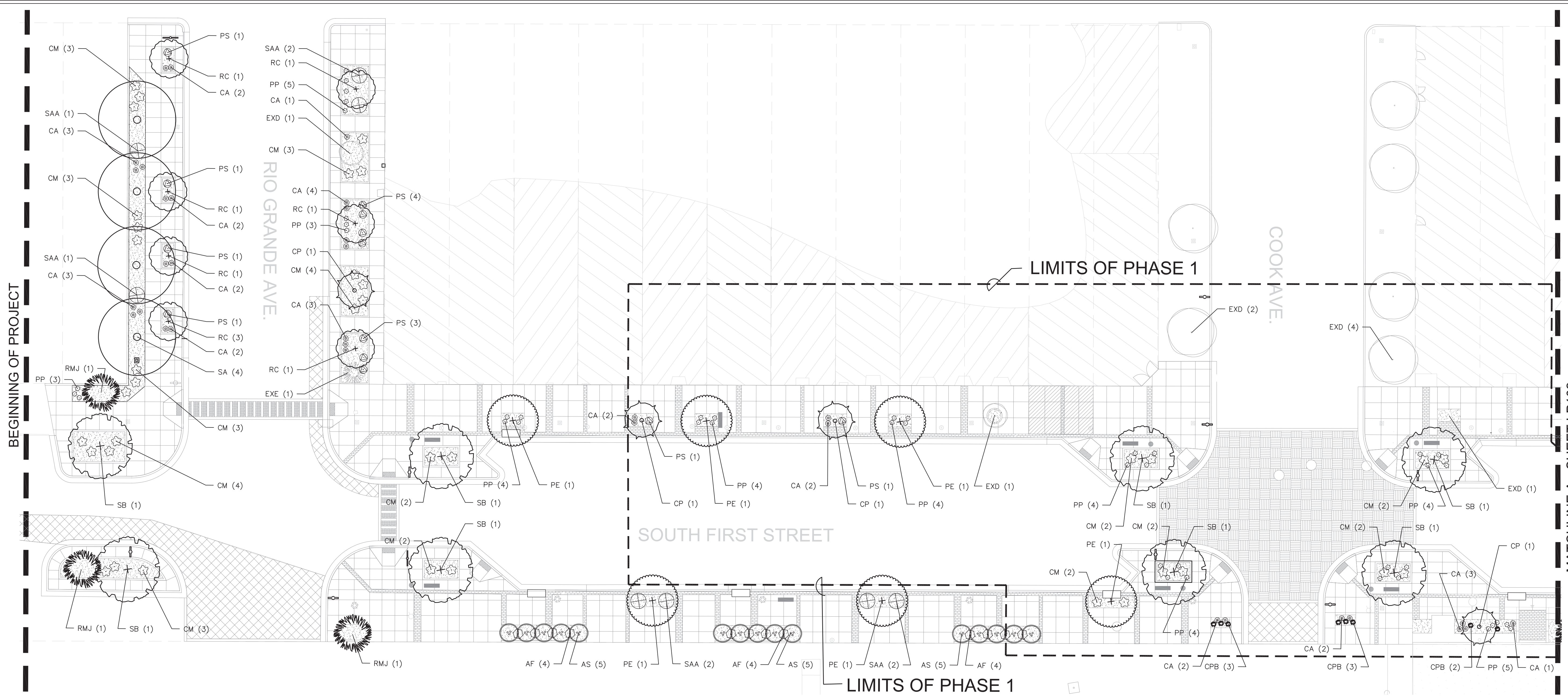
A3 TRANSITION STRIPING
SCALE: 1"=20'-0"



1	7/26/18	PHASE 1 LIMITS
0	6/07/16	ORIGINAL PLAN SUBMITTAL
REV NO	REV DATE	DESCRIPTION
PROJECT NUMBER: 1315		
DESIGNED BY: KS		
DRAWN BY: KS		
CHECKED BY: KS		
SIGNAGE + STRIPING PLAN		
PROJECT DATE: 6/07/16		

SIGNAGE + STRIPING PLAN

GREAT BLOCKS - FIRST STREET - PHASE ONE
NEW MEXICO MAIN STREET
RATON, NEW MEXICO



MRWM
 LANDSCAPE ARCHITECTS
 mrwma.com 505 268 2266

STATE OF NEW MEXICO
 DENNIS C. WILKINSON
 LICENSE NO. 149
 REGISTERED LANDSCAPE ARCHITECT
 7/26/18

REV NO	DATE	DESCRIPTION
1	6/29/18	PHASE 1 LIMITS
0	5/27/18	ORIGINAL PLAN SUBMITTAL

PROJECT NUMBER: 1315
 DESIGNED BY: RL/RC
 DRAWN BY: RC
 CHECKED BY: RL
 PROJECT DATE: 07/26/18

PLANT LEGEND

KEY	COMMON NAME	BOTANICAL NAME	QTY	INSTALLED SIZE	REMARKS	MATURE SIZE
SHADE TREES						
PE	PROSPECTOR ELM	ULMUS WILSONIANA 'PROSPECTOR'	8	2" CAL., 10'-12" HT.	30" BOX	40' HT., 20' SPD.
SB	SENSATION BOX ELDER	ACER NEGUNDO 'SENSATION'	9	2" CAL., 10'-12" HT.	30" BOX	30' HT., 25' SPD.
CP	CHANTICLEER PEAR	PYRUS CALLERYANA 'GLEN'S FORM'	4	2" CAL., 10'-12" HT.	30" BOX	40' HT., 15' SPD.
SA	SUMMIT ASH	FRAXINUS PENNSYLVANICA 'SUMMIT'	4	2" CAL., 10'-12" HT.	30" BOX	40' HT., 30' SPD.
ACCENT TREES						
RC	RADIANT CRABAPPLE	MALUS 'RADIANT'	7	2" CAL., 8'-10" HT.	30" BOX	20' HT., 15' SPD.
AS	ASPEN	POPULUS TREMULOIDES	15	2" CAL., 8'-10" HT.	30" BOX	30' HT., 15' SPD.
EVERGREEN TREES						
RMJ	ROCKY MOUNTAIN JUNIPER	JUNIPERUS SCOPULORUM	4	MIN. 5' HT.	15-GAL	20' HT., 15' SPD.

PLANT LEGEND

KEY	COMMON NAME	BOTANICAL NAME	QTY	INSTALLED SIZE	REMARKS	MATURE SIZE
SHRUBS						
AF	ARCTIC FIRE RED TWIG DOGWOOD	CORNUS SERICEA 'FARROW'	12	MIN. 8" HT.	5-GAL	4' HT. & SPD.
PS	PRAIRIE SAGE	ARTEMISIA LUDOVICIANA	14	MIN. 8" HT.	5-GAL	3' HT & SPD.
CM	CREeping MAHONIA	MAHONIA REPENS	39	MIN. 8" HT.	5-GAL	2' HT., 4' SPD.
SAA	AUTUMN AMBER SUMAC	RHUS TRILOBATA 'AUTUMN AMBER'	8	MIN. 12" SPD.	5-GAL	3' HT., 6' SPD.
CPB	CRIMSON PYGMY BARBERRY	BERBERIS THUNBERGII 'CRIMSON PYGMY'	8	MIN. 8" HT.	5-GAL	2' HT., 2' SPD.
PERENNIALS						
CA	CATMINT	NEPETA X FAASSENII	38	MIN. 4" HT.	1-GAL	1' HT., 2' SPD.
PP	PINELEAF PENSTEMON	PENSTEMON PINIFOLIUS	56	MIN. 4" HT.	1-GAL	1' HT., 2' SPD.
EXISTING TREE TO REMAIN						
EXD	DECIDUOUS (VARIOUS SIZES)					
EXE	EVERGREEN					

HATCH LEGEND
 GRAVEL MULCH - SEE GENERAL NOTE B.

- GENERAL NOTES**
- IN CASE OF DISCREPANCY IN PLANT QUANTITIES SHOWN ON THE PLANT LEGEND AND THOSE SHOWN ON THE PLANTING PLAN, THE QUANTITIES SHOWN ON THE PLAN SHALL GOVERN. CONTRACTOR SHALL VERIFY ALL QUANTITIES PRIOR TO BID AND INSTALLATION. NO ADDITIONAL PAYMENT WILL BE MADE FOR ANY DISCREPANCIES IN QUANTITIES BETWEEN THE PLANTING PLAN AND THE PLANT LIST.
 - GRAVEL MULCH SHALL BE 1" GRADUATED TAN, AS AVAILABLE FROM BTU BLOCK AND CONCRETE (575-445-2373), OR APPROVED EQUAL, INSTALLED AT A 4" DEPTH OVER FILTER FABRIC.
 - FILTER FABRIC SHALL BE MIN. 4 OZ. NON-WOVEN NEEDLE-PUNCHED POLYPROPYLENE (DEWITT OR EQUIVALENT), OVERLAP ENDS 3" AND TURN DOWN EDGES 6".
 - THE TOP OF MULCH SHALL BE 1" BELOW TOP OF ADJACENT CONCRETE SURFACES.
 - CONTRACTOR SHALL PRUNE LOWER BRANCHES OF DECIDUOUS TREES AS DIRECTED BY LANDSCAPE ARCHITECT IN THE FIELD.
 - TREES SHALL BE INSTALLED PER DETAIL A2/LI501.
 - SHRUBS SHALL BE INSTALLED PER DETAIL A1/LI501.
 - IF THERE IS A DISCREPANCY IN THE FIELD OR NURSERY BETWEEN THE CONTAINER SIZE CALLED OUT UNDER "REMARKS" AND HEIGHT & SPREAD CALLED OUT UNDER "SIZE", THE SPECIFIED PLANT MUST MEET HEIGHT & SPREAD REQUIREMENTS SPECIFIED UNDER "SIZE", EVEN IF A LARGER CONTAINER SIZE IS REQUIRED TO MEET THESE SPECIFICATIONS, AT NO ADDITIONAL COST TO THE OWNER.

A1 PLANTING PLAN
 SCALE: 1"=20'-0"



PLANTING PLAN
 GREAT BLOCKS - FIRST STREET - PHASE ONE
 NEW MEXICO MAIN STREET
 RATON, NEW MEXICO